

CABINET DIVISION

- » Claytek CO., LTD., was established since 1979 in design and manufacturing all series of Industrial 19" rackmount Cabinet, keyboard drawer, sliding rail, monitor enclosure etc... We specialize in OEM/ODM projects with many clients, and our friendly after-sales services has won us positive response from customers around the world.

aStar, Good Start!

WM Wallmount Series

- 6U
- 9U
- 12U
- 15U
- 18U

WO Open Frame Rack

WL LCD Series

- 15" WL LCD Series
- 17" WL LCD Series
- 19" WL LCD Series

WA-Accessories Series



WM645B.WM660B

6U 450mm/600mm Depth Wallmount Server Cabinet

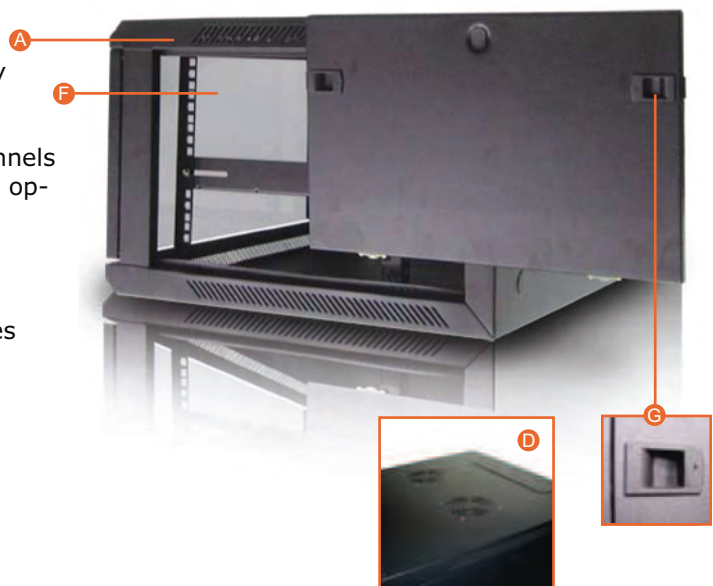


INTRODUCTION

Elegant and secured WM645B/WM660B wall mount cabinet by iStarUSA. The easy side panel access is convenient to perform routine maintenance, but also can be locked to prevent unauthorized access. Three ways, top, bottom, and rear cabling tunnels enable data and cable routing. WM series incorporate optimal cooling design. The partially vented frames and two optional AC fans that can be put on the top panel give the wall-mount cabinet excellent air ventilation. Heat-treated glass door provides extra strength and able to silkscreen logos, marks, and labels to boost product image.

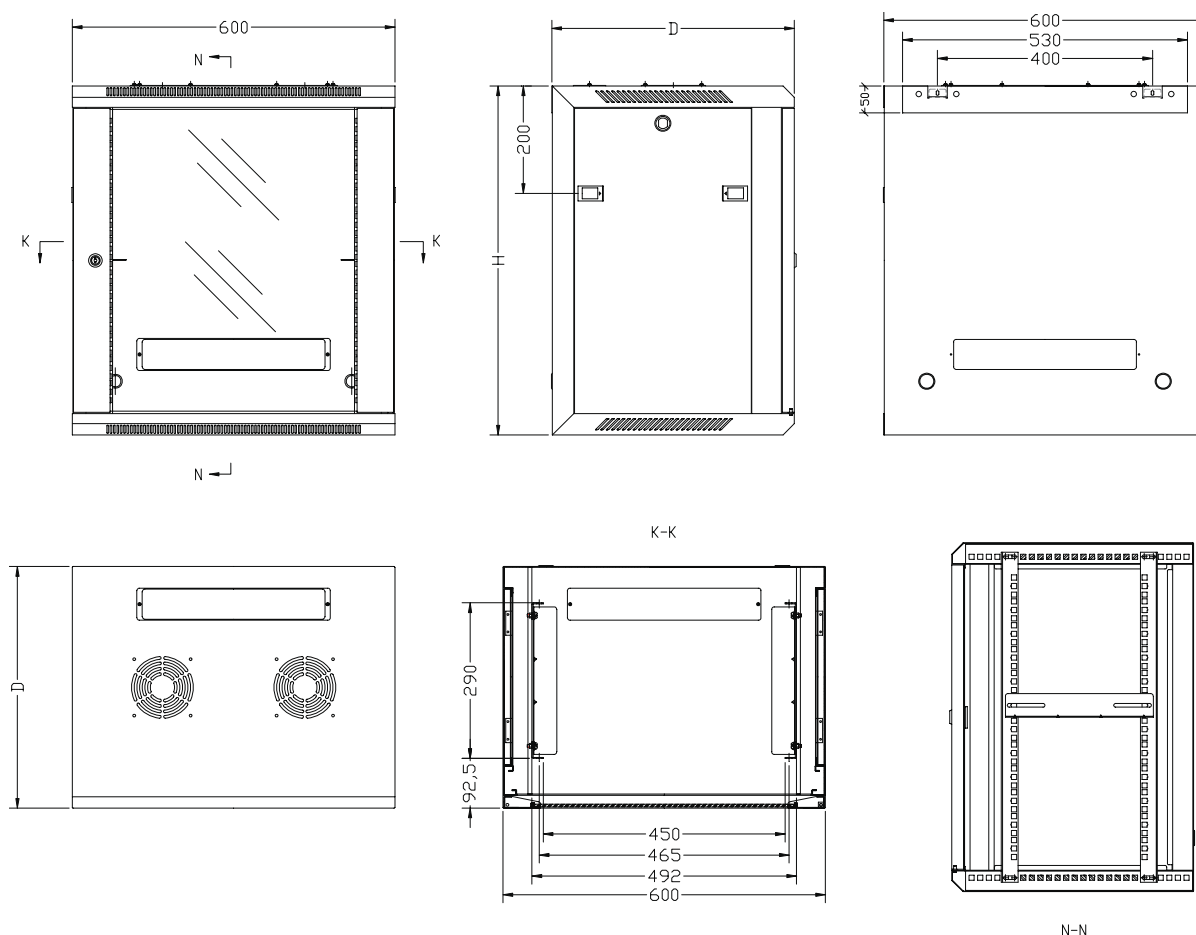
FEATURES

- A Sturdy and Rugged Welded Frame Structure Comes Pre-Assembled
- B Quick release door: the front door can be easily moved to the opposite side for left-handed or right-handed hinging
- C Three Ways, Top, Bottom, and Rear Cabling Tunnels
- D Air ventilation: partially vented frames and two optional AC fans give the cabinet max air flow
- E Meet IP20 Protection Grade
- F Enforced Strengthen Glass Front Door with Security Key Lock
- G Removable Side Panels with Easy Handy Latches
- H 2.0mm SPCC High-Quality Cold Roll Steel Post; 1.2mm for Enclosure
- I Degreasing, Acidification, Phosphoric, Static Electricity or Powder Coat Surface Finish



WM645B.WM660B

DRAWING



SPECIFICATIONS

Model Number	WM645B	WM660B
RoHS Compliance Version	Yes	Yes
Rack Units	6U	6U
Dimensions [WxHxD]	600 x 368 x 450 mm	600 x 368 x 600 mm
Internal Depth [mm]	420mm	570mm
Security	Front & Rear Locks	Front & Rear Locks
Industry Standard	Accord with ANSI/EIARS-310-D, IEC297, DIN41494, DIN41491, Part7GB/T3047.2-92	Accord with ANSI/EIARS-310-D, IEC297, DIN41494, DIN41491, Part7GB/T3047.2-92
Thickness	2.0mm SPCC High-Quality Cold Roll Steel Post; 1.2mm for Enclosure	
Materials	SPCC High-Quality Cold Roll Steel	
Safety	TUEV	
EMI Noise Filter	CE	

:: Specification and wiring diagram subject to change without notice
 :: Limited Life Time Warranty
 :: Last Update: Oct/2007



WM945B.WM960B

9U 450mm/600mm Depth Wallmount Server Cabinet

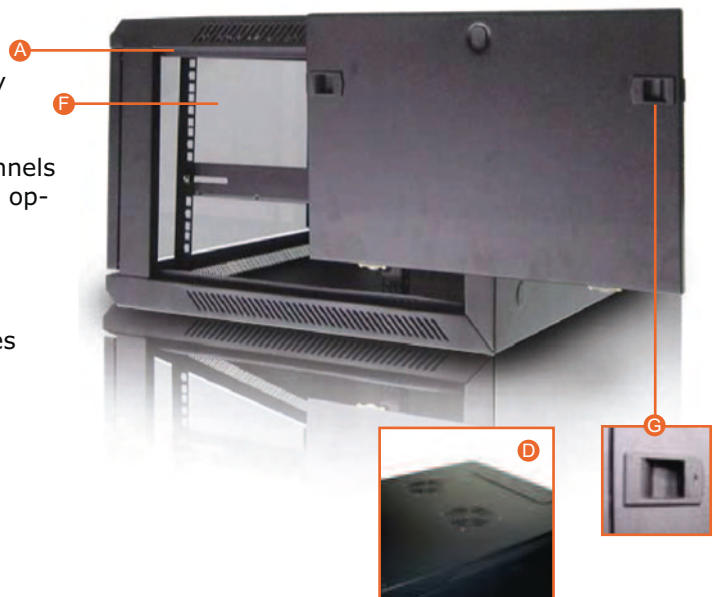


INTRODUCTION

Elegant and secured WM945B/WM960B wall mount cabinet by iStarUSA. The easy side panel access is convenient to perform routine maintenance, but also can be locked to prevent unauthorized access. Three ways, top, bottom, and rear cabling tunnels enable data and cable routing. WM series incorporate optimal cooling design. The partially vented frames and two optional AC fans that can be put on the top panel give the wall-mount cabinet excellent air ventilation. Heat-treated glass door provides extra strength and able to silkscreen logos, marks, and labels to boost product image.

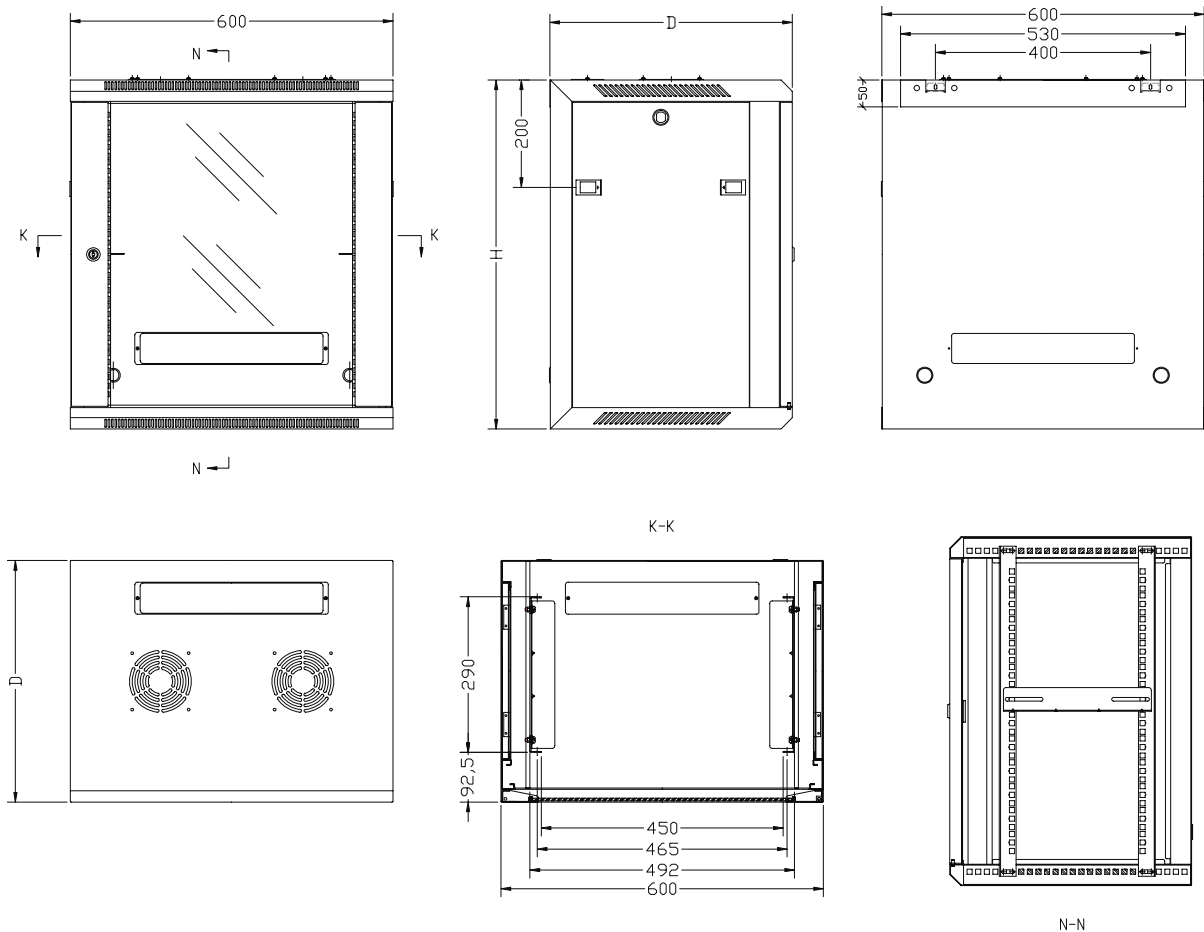
FEATURES

- A Sturdy and Rugged Welded Frame Structure Comes Pre-Assembled
- B Quick release door: the front door can be easily moved to the opposite side for left-handed or right-handed hinging
- C Three Ways, Top, Bottom, and Rear Cabling Tunnels
- D Air ventilation: partially vented frames and two optional AC fans give the cabinet max air flow
- E Meet IP20 Protection Grade
- F Enforced Strengthen Glass Front Door with Security Key Lock
- G Removable Side Panels with Easy Handy Latches
- H 2.0mm SPCC High-Quality Cold Roll Steel Post; 1.2mm for Enclosure
- I Degreasing, Acidification, Phosphoric, Static Electricity or Powder Coat Surface Finish



WM945B.WM960B

DRAWING



SPECIFICATIONS

Model Number	WM945B	WM960B
RoHS Compliance Version	Yes	Yes
Rack Units	9U	9U
Dimensions [WxHxD]	600 x 501 x 450 mm	600 x 501 x 600 mm
Internal Depth [mm]	420mm	570mm
Security	Front & Rear Locks	Front & Rear Locks
Industry Standard	Accord with ANSI/EIARS-310-D, IEC297, DIN41494, DIN41491, Part7GB/T3047.2-92	Accord with ANSI/EIARS-310-D, IEC297, DIN41494, DIN41491, Part7GB/T3047.2-92
Thickness	2.0mm SPCC High-Quality Cold Roll Steel Post; 1.2mm for Enclosure	
Materials	SPCC High-Quality Cold Roll Steel	
Safety	TUEV	
EMI Noise Filter	CE	

:: Specification and wiring diagram subject to change without notice
 :: Limited Life Time Warranty
 :: Last Update: Oct/2007



WM1245B.WM1260B

12U 450mm/600mm Depth Wallmount Server Cabinet

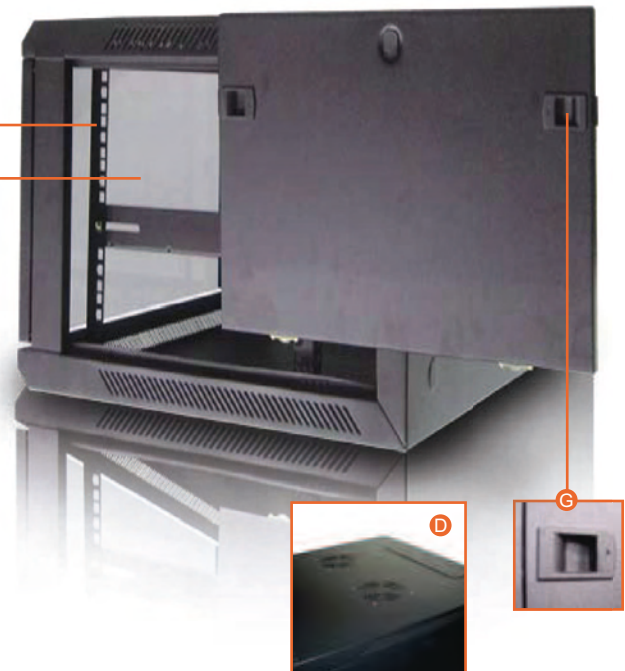


INTRODUCTION

Elegant and secured WM1245B/WM1260B wall mount cabinet by iStarUSA. The easy side panel access is convenient to perform routine maintenance, but also can be locked to prevent unauthorized access. Three ways, top, bottom, and rear cabling tunnels enable data and cable routing. WM series incorporate optimal cooling design. The partially vented frames and two optional AC fans that can be put on the top panel give the wall-mount cabinet excellent air ventilation. Heat-treated glass door provides extra strength and able to silkscreen logos, marks, and labels to boost product image.

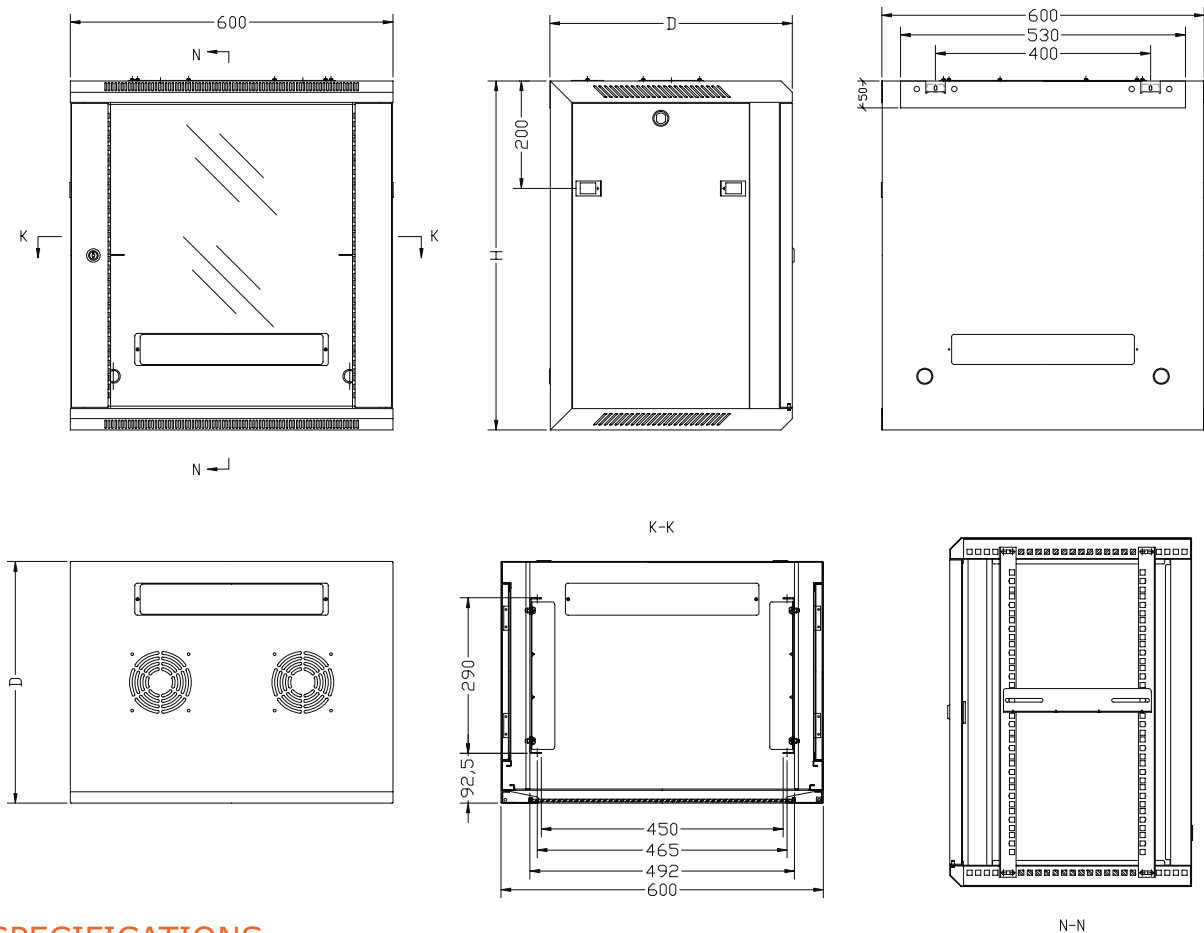
FEATURES

- A Sturdy and Rugged Welded Frame Structure Comes Pre-Assembled
- B Quick release door: the front door can be easily moved to the opposite side for left-handed or right-handed hinging
- C Three Ways, Top, Bottom, and Rear Cabling Tunnels
- D Air ventilation: partially vented frames and two optional AC fans give the cabinet max air flow
- E Meet IP20 Protection Grade
- F Enforced Strengthen Glass Front Door with Security Key Lock
- G Removable Side Panels with Easy Handy Latches
- H 2.0mm SPCC High-Quality Cold Roll Steel Post; 1.2mm for Enclosure
- I Degreasing, Acidification, Phosphoric, Static Electricity or Powder Coat Surface Finish



WM1245B.WM1260B

DRAWING



SPECIFICATIONS

Model Number	WM1245B	WM1260B
RoHS Compliance Version	Yes	Yes
Rack Units	12U	12U
Dimensions [WxHxD]	600 x 635 x 450 mm	600 x 635 x 600 mm
Internal Depth [mm]	420mm	570mm
Security	Front & Rear Locks	Front & Rear Locks
Industry Standard	Accord with ANSI/EIARS-310-D, IEC297, DIN41494, DIN41491, Part7GB/T3047.2-92	Accord with ANSI/EIARS-310-D, IEC297, DIN41494, DIN41491, Part7GB/T3047.2-92
Thickness	2.0mm SPCC High-Quality Cold Roll Steel Post; 1.2mm for Enclosure	
Materials	SPCC High-Quality Cold Roll Steel	
Safety	TUEV	
EMI Noise Filter	CE	

:: Specification and wiring diagram subject to change without notice
 :: Limited Life Time Warranty
 :: Last Update: Oct/2007



WM1545B.WM1560B

15U 450mm/600mm Depth Wallmount Server Cabinet

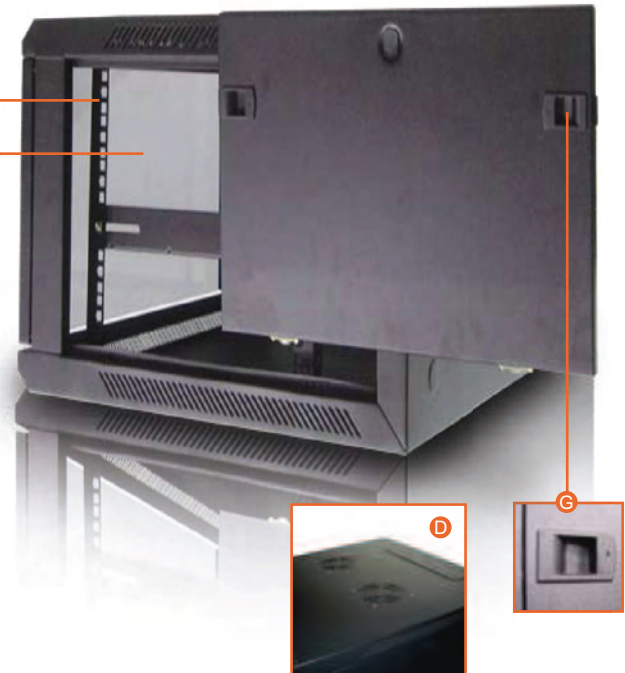


INTRODUCTION

Elegant and secured WM1545B/WM1560B wall mount cabinet by iStarUSA. The easy side panel access is convenient to perform routine maintenance, but also can be locked to prevent unauthorized access. Three ways, top, bottom, and rear cabling tunnels enable data and cable routing. WM series incorporate optimal cooling design. The partially vented frames and two optional AC fans that can be put on the top panel give the wall-mount cabinet excellent air ventilation. Heat-treated glass door provides extra strength and able to silkscreen logos, marks, and labels to boost product image.

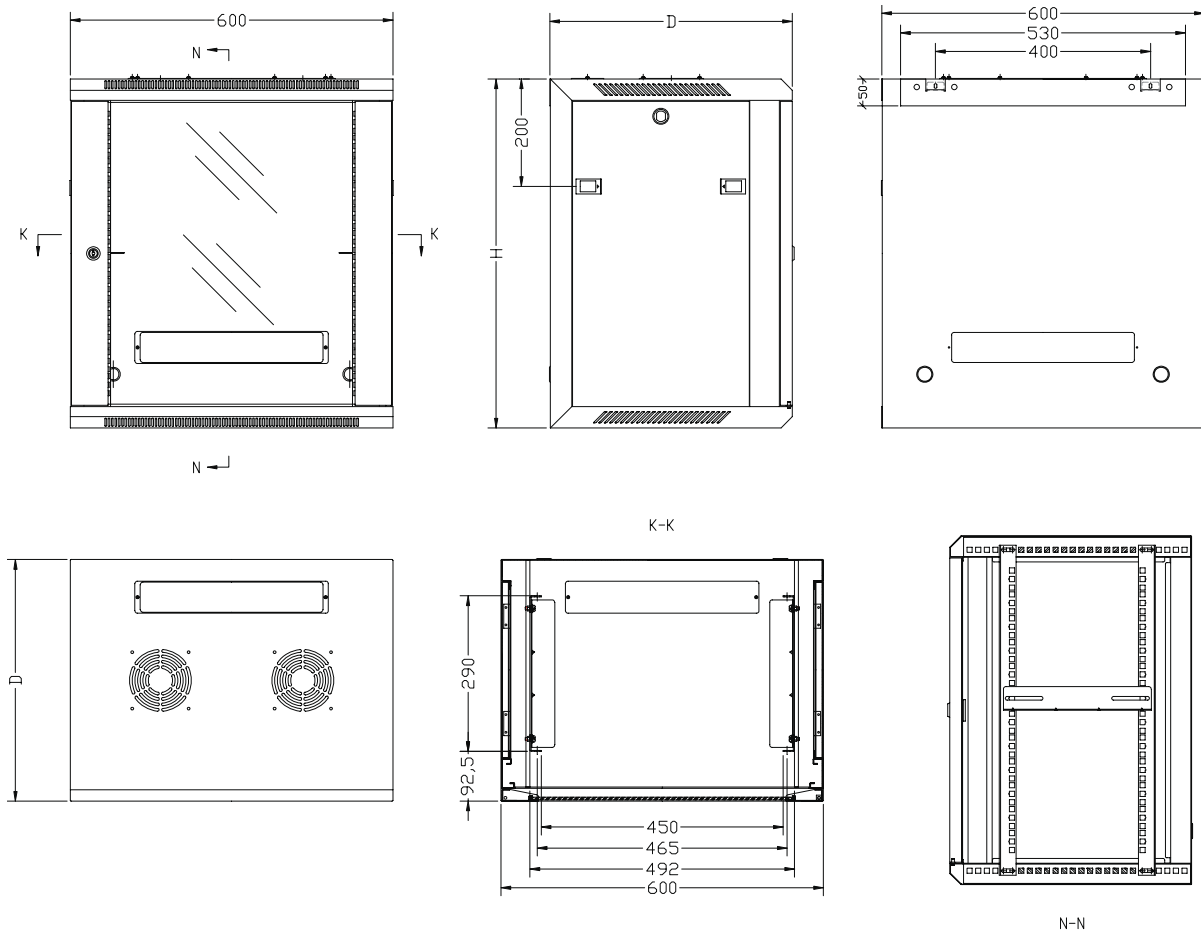
FEATURES

- A** Sturdy and Rugged Welded Frame Structure Comes Pre-Assembled
- B** Quick release door: the front door can be easily moved to the opposite side for left-handed or right-handed hinging
- C** Three Ways, Top, Bottom, and Rear Cabling Tunnels
- D** Air ventilation: partially vented frames and two optional AC fans give the cabinet max air flow
- E** Meet IP20 Protection Grade
- F** Enforced Strengthen Glass Front Door with Security Key Lock
- G** Removable Side Panels with Easy Handy Latches
- H** 2.0mm SPCC High-Quality Cold Roll Steel Post; 1.2mm for Enclosure
- I** Degreasing, Acidification, Phosphoric, Static Electricity or Powder Coat Surface Finish



WM1545B.WM1560B

DRAWING



SPECIFICATIONS

Model Number	WM1545B	WM1560B
RoHS Compliance Version	Yes	Yes
Rack Units	15U	15U
Dimensions [WxHxD]	600 x 769 x 450 mm	600 x 769 x 600 mm
Internal Depth [mm]	420mm	570mm
Security	Front & Rear Locks	Front & Rear Locks
Industry Standard	Accord with ANSI/EIARS-310-D, IEC297, DIN41494, DIN41491, Part7GB/T3047.2-92	Accord with ANSI/EIARS-310-D, IEC297, DIN41494, DIN41491, Part7GB/T3047.2-92
Thickness	2.0mm SPCC High-Quality Cold Roll Steel Post; 1.2mm for Enclosure	
Materials	SPCC High-Quality Cold Roll Steel	
Safety	TUEV	
EMI Noise Filter	CE	

:: Specification and wiring diagram subject to change without notice
 :: Limited Life Time Warranty
 :: Last Update: Oct/2007



WM1845B.WM1860B

18U 450mm/600mm Depth Wallmount Server Cabinet

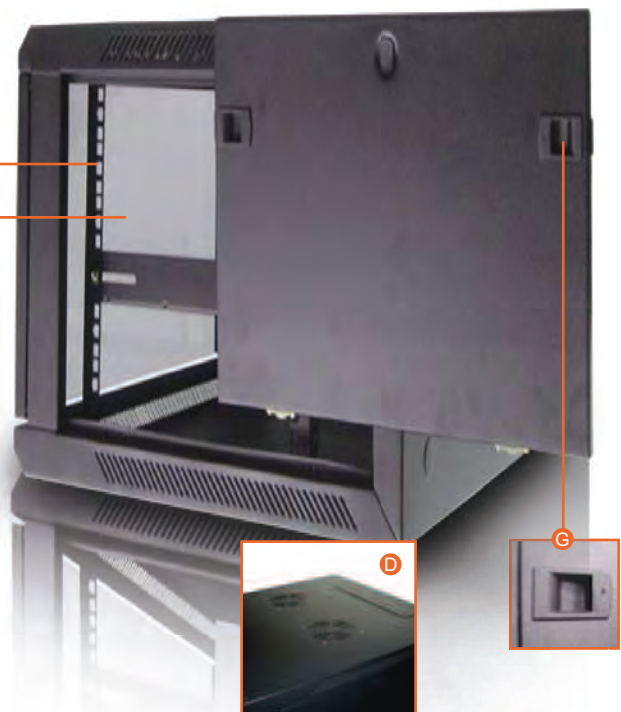


SPECIFICATIONS

Elegant and secured WM1845B/WM1860B wall mount cabinet by iStarUSA. The easy side panel access is convenient to perform routine maintenance, but also can be locked to prevent unauthorized access. Three ways, top, bottom, and rear cabling tunnels enable data and cable routing. WM series incorporate optimal cooling design. The partially vented frames and two optional AC fans that can be put on the top panel give the wall-mount cabinet excellent air ventilation. Heat-treated glass door provides extra strength and able to silkscreen logos, marks, and labels to boost product image.

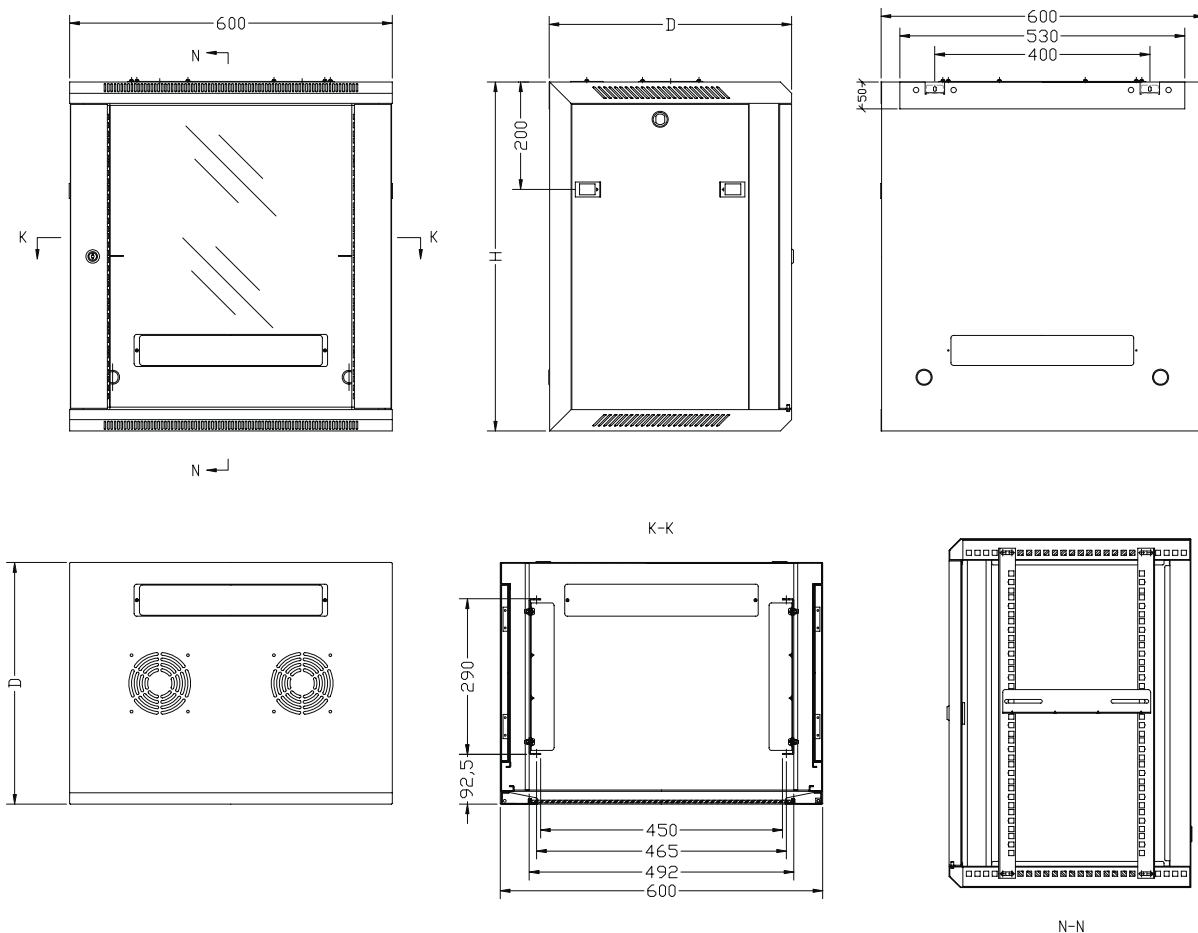
FEATURES

- A** Sturdy and Rugged Welded Frame Structure Comes Pre-Assembled
- B** Quick release door: the front door can be easily moved to the opposite side for left-handed or right-handed hinging
- C** Three Ways, Top, Bottom, and Rear Cabling Tunnels
- D** Air ventilation: partially vented frames and two optional AC fans give the cabinet max air flow
- E** Meet IP20 Protection Grade
- F** Enforced Strengthen Glass Front Door with Security Key Lock
- G** Removable Side Panels with Easy Handy Latches
- H** 2.0mm SPCC High-Quality Cold Roll Steel Post; 1.2mm for Enclosure
- I** Degreasing, Acidification, Phosphoric, Static Electricity or Powder Coat Surface Finish



WM1845B.WM1860B

DRAWING



SPECIFICATIONS

Model Number	WM1845B	WM1860B
RoHS Compliance Version	Yes	Yes
Rack Units	18U	18U
Dimensions [WxHxD]	600 x 901 x 450 mm	600 x 901 x 600 mm
Internal Depth [mm]	420mm	570mm
Security	Front & Rear Locks	Front & Rear Locks
Industry Standard	Accord with ANSI/EIARS-310-D, IEC297, DIN41494, DIN41491, Part7GB/T3047.2-92	Accord with ANSI/EIARS-310-D, IEC297, DIN41494, DIN41491, Part7GB/T3047.2-92
Thickness	2.0mm SPCC High-Quality Cold Roll Steel Post; 1.2mm for Enclosure	
Materials	SPCC High-Quality Cold Roll Steel	
Safety	TUEV	
EMI Noise Filter	CE	

:: Specification and wiring diagram subject to change without notice
 :: Limited Life Time Warranty
 :: Last Update: Oct/2007



WO15AB WO36AB WO22AB WO45AB

15/22/36/45U 4 Post Open Frame Rack

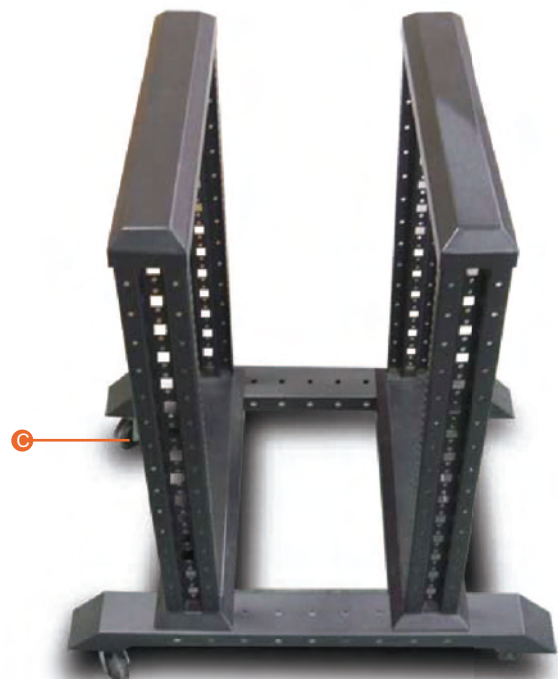


INTRODUCTION

iStarUSA open frame rack provide simplicity with mobility. Quick and easy assembly steps to setup open rack. The WO sturdy steel frame construction enforces stability and durability. Steel iron castors come standard to help moving the server easily to any location. Open frame rack has higher thermal manageability by room or central air conditioning. WO series is a flexible and cost-effective solution for rackmount cabinet.

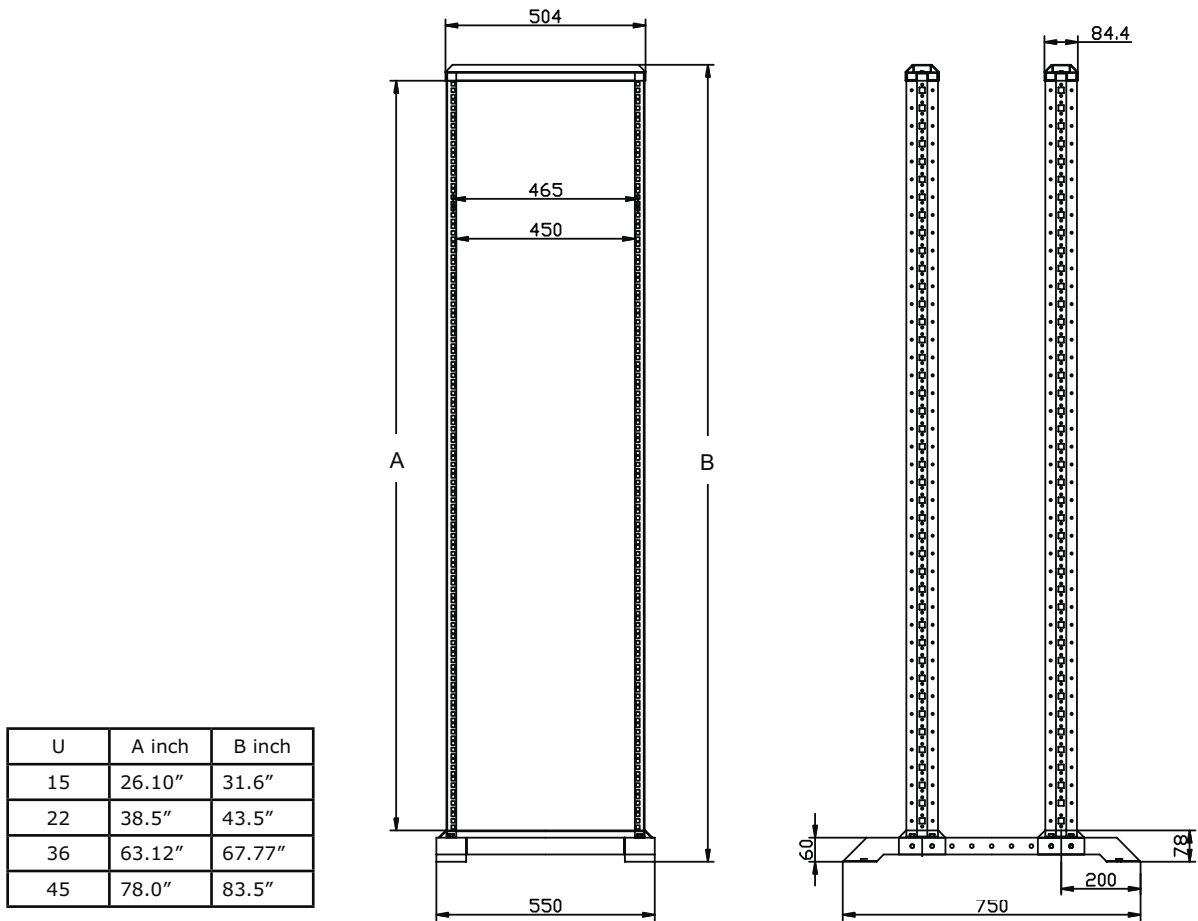
FEATURES

- A** Open Frame Construction Enables Quick Access to Rackmount System
- B** Max Air Flow and Temperature Control by Central AC or by Room
- C** Easy to Transport with Rolling Caster
- D** Manufactured in Accordance with ANSI / EIA RS-310-D, IEC297-2, DIN41491 (PART 1), DIN41494 (PART7) and GB / T3047.2-921 Standards
- E** Modular Design, Easily Assemble and Disassemble For Logistic and Relocation of Cabinet to Enable Cost-Effective Solution



WO15AB WO36AB WO22AB WO45AB

DRAWING



SPECIFICATIONS

Model Number	WO15AB	WO22AB	WO36AB	WO45AB
RoHS Compliance Version	Yes			
Rack Units	15U	22U	36U	45U
Dimensions [WxHxD]	22.13" x 34.6" x 30.6"	22.13" x 46.25" x 30.6"	22.13" x 70.5" x 30.6"	22.13" x 86.5" x 30.6"
Hole to Hole [Depth]	Max: 17.5", Min: 5.5"			
Outside Post to Post [Depth]	Max: 21.5", Min: 9.5"			
Inside Post to Post [Depth]	Max: 13.6", Min: 2.0"			
Industry Standard	ANSI/EIA RS-310D, DIN41491, PART1, IEC297-2, PART7, GB/T3047.2-92			
Surface Treatment	Degreasing, Phosphoric, and Powder Coat			
Packaging Dimensions [WxHxD]	25.98" x 33.07" x 11.22"	23.23" x 45.28" x 11.22"	23.23" x 70.08" x 11.22"	23.23" x 90.12" x 11.22"
Weight	55.13 lbs	60.64 lbs	76.07 lbs	87.73 lbs

* The Height Includes Caster

:: Specification and wiring diagram subject to change without notice
 :: Limited Life Time Warranty
 :: Last Update: Oct/2007



WL-21501 WL-21508 WL-21516

1U Rackmount 15" TFT LCD Keyboard Drawer

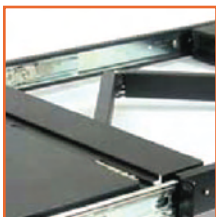


INTRODUCTION

The WL-21501, WL-21508, WL-21516 1U 15" TFT LCD keyboard drawer provides industrial level input solution to optimize your system in just 1U rack space. With features such as dual-rail design and built-in LCD OSD, it provides effective assistant for an administrator to control multiple servers.

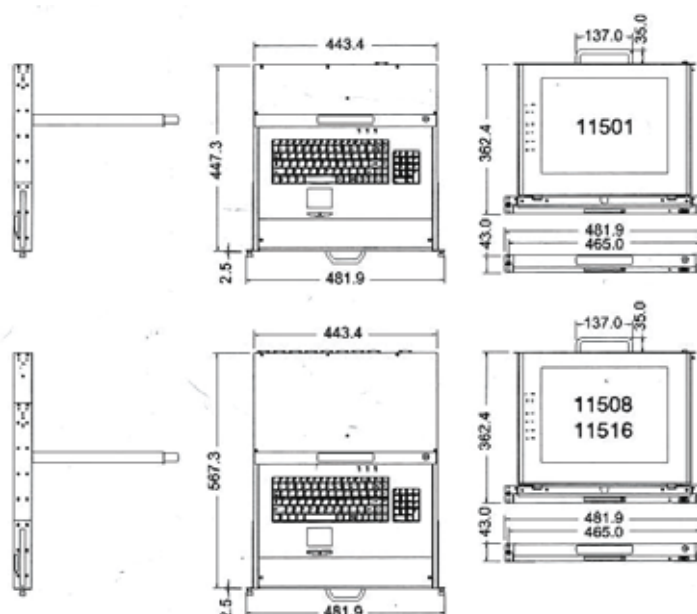
FEATURES

- A Dual Rail for Independent Panel and Keyboard Tray
- B Support 17 Various Keyboard Languages
- C Bright Active Matrix TFT Display
- D OSD Function (On Screen Display) for LCD Display
- E Hidden Handle for Keyboard Tray
- F Durable Keyboards
- G Panel Protected by Tempered Glass
- H Optional Touch Screen LCD (*WL-21501 only)
- I Optional Audio Function (*WL-21501 only)
- J Optional DC Power



WL-21501 WL-21516 WL-21508

DRAWING



SPECIFICATIONS

Model Number	WL-21501	WL-21508	WL-21516
RoHS Compliance Version	Yes		
Dimensions [WxHxD]	19 x 1.7 x 17.7 inch	19 x 1.7 x 22.4 inch	19 x 1.7 x 22.4 inch
Net Weight	10.5 Kg / 23.1 lbs	11.5 Kg / 25.4 lbs	12.0 Kg / 26.5 lbs
Number of Ports	1	8	16
Display	15 inches		
Panel Type	Active Matrix TFT LCD		
Resolution Capabilities	Maximum Resolution up to 1027 x 768 (XGA)		
Pixel Pitch	Supports 0.297mm x 0.297mm		
Viewing Angle	130°(H) / 100°(V)		
Contrast Ratio	400:1		
Brightness	White 250 cd/m2 (Center 1 point Typ)		
Back Light	Dual Lamps for Back Light		
Supported Colors	16M Colors (6-bit with FRC)		
Response Time	Rising Time: 5ms, Decay Time: 11ms		
Keyboard Mouse	106 Key PS/2 Keyboard with Touch Pad		
Sync	45 ~ 80KHz		
Power Source	100~240 VAC Input		
Power Consumption	16W (10.41W for Panel)		
Temperature	Operate: 32° ~ 122°F, Storage: -4° ~ 140°F		
Humidity	10% ~ 90% RH		
Material of Main Chassis	Heavy Duty Steel		
Certification	CE/FCC/UL/CUL/C-Tick		

:: Specification and wiring diagram subject to
change without notice
:: Limited Life Time Warranty
:: Last Update: Oct/2007



WL-21701 WL-21708 WL-21716

1U Rackmount 17" TFT LCD Keyboard Drawer

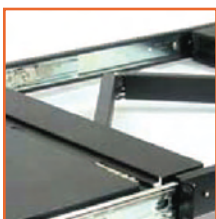


INTRODUCTION

The WL-21701, WL-21708, WL-21716 1U 17" TFT LCD keyboard drawer provides industrial level input solution to optimize your system in just 1U rack space. With features such as dual-rail design and built-in LCD OSD, it provides effective assistant for an administrator to control multiple servers.

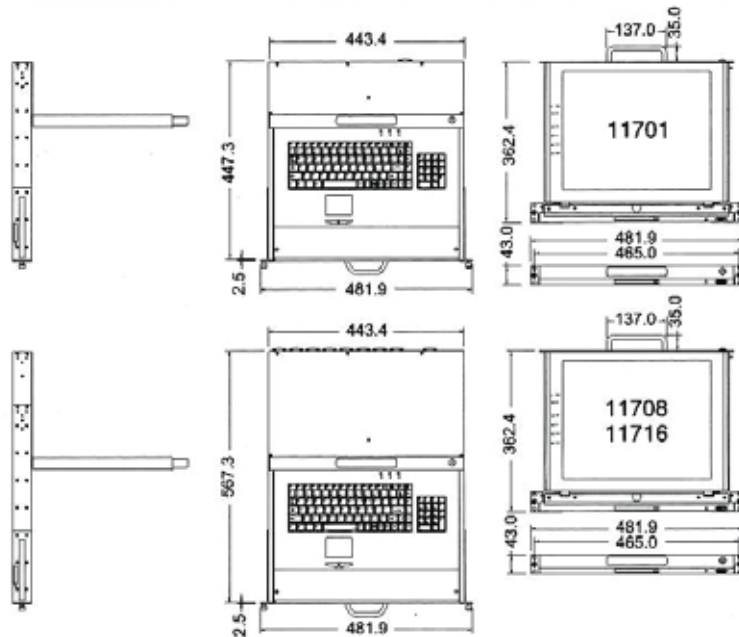
FEATURES

- A Dual Rail for Independent Panel and Keyboard Tray
- B Support 17 Various Keyboard Languages
- C Bright Active Matrix TFT Display
- D OSD Function (On Screen Display) for LCD Display
- E Hidden Handle for Keyboard Tray
- F Durable Keyboards
- G Panel Protected by Tempered Glass
- H Optional Touch Screen LCD (*WL-21701 only)
- I Optional Audio Function (*WL-21701 only)
- J Optional DC Power



WL-21701 WL-21716 WL-21708

DRAWING



SPECIFICATIONS

Model Number	WL-21701	WL-21708	WL-21716
RoHS Compliance Version	Yes		
Dimensions [WxHxD]	19 x 1.7 x 17.7 inch	19 x 1.7 x 22.4 inch	19 x 1.7 x 22.4 inch
Net Weight	12.0 Kg / 26.5 lbs	13.0 Kg / 28.7 lbs	13.5 Kg / 29.8 lbs
Number of Ports	1	8	16
Display	17 inches		
Panel Type	Active Matrix TFT LCD		
Resolution Capabilities	Maximum Resolution up to 1280 x 1024 (SXGA)		
Pixel Pitch	Supports 0.264mm x 0.264mm		
Viewing Angle	60° ~70° (H) / 45° ~60° (V)		
Contrast Ratio	450:1		
Brightness	White 250 cd/m2 (Center 1 point Typ)		
Back Light	Four Lamps for Back Light		
Supported Colors	16.2M Colors (6-bit with FRC)		
Response Time	Rising Time: 2ms, Decay Time: 14ms		
Keyboard Mouse	106 Key PS/2 Keyboard with Touch Pad		
Sync	45 ~ 80KHz		
Power Source	100~240 VAC Input		
Power Consumption	25W (19.05W for Panel)		
Temperature	Operate: 32° ~ 122°F, Storage: -4° ~ 140°F		
Humidity	10% ~ 90% RH		
Material of Main Chassis	Heavy Duty Steel		
Certification	CE/FCC/UL/CUL/C-Tick		

:: Specification and wiring diagram subject to change without notice
 :: Limited Life Time Warranty
 :: Last Update: Oct/2007



WL-21901 WL-21908 WL-21916

1U Rackmount 19" TFT LCD Keyboard Drawer

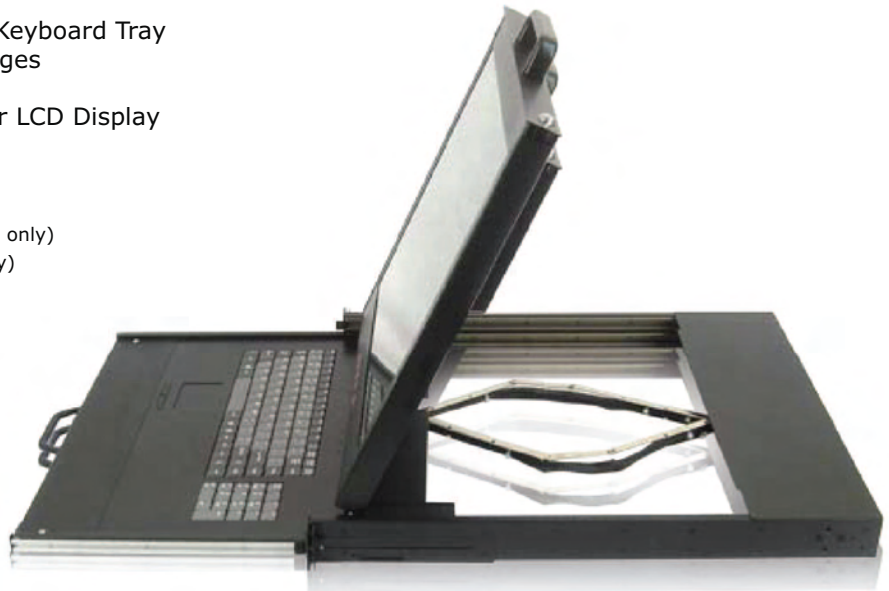


INTRODUCTION

The WL-21901, WL-21908, WL-21916 1U 19" TFT LCD keyboard drawer provides industrial level input solution to optimize your system in just 1U rack space. With features such as dual-rail design and built-in LCD OSD, it provides effective assistant for an administrator to control multiple servers.

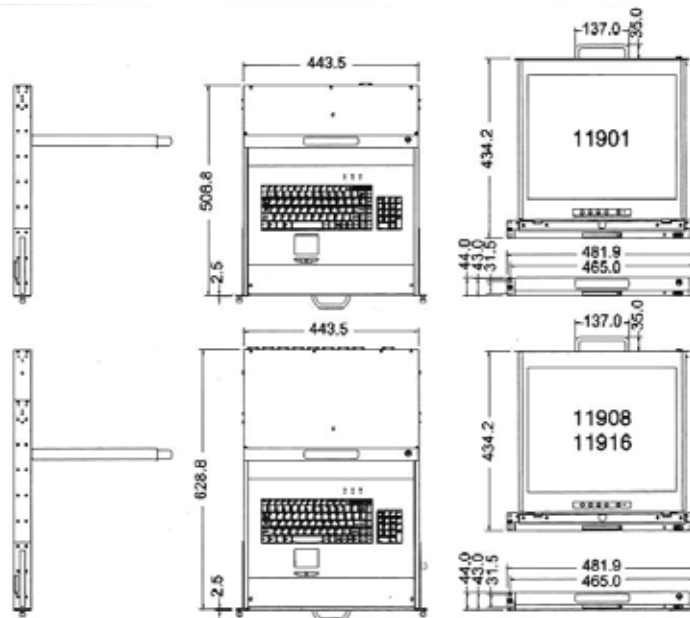
FEATURES

- A Dual Rail for Independent Panel and Keyboard Tray
- B Support 17 Various Keyboard Languages
- C Bright Active Matrix TFT Display
- D OSD Function (On Screen Display) for LCD Display
- E Hidden Handle for Keyboard Tray
- F Durable Keyboards
- G Panel Protected by Tempered Glass
- H Optional Touch Screen LCD (*WL-21901 only)
- I Optional Audio Function (*WL-21901 only)
- J Optional DC Power



WL-21901 WL-21916 WL-21908

DRAWING



SPECIFICATIONS

Model Number	WL-21901	WL-21908	WL-21916
RoHS Compliance Version	Yes		
Dimensions [WxHxD]	19 x 1.7 x 20.1 inch	19 x 1.7 x 24.9 inch	19 x 1.7 x 24.9 inch
Net Weight	12.5 Kg / 27.6 lbs	14.0 Kg / 30.9 lbs	14.5 Kg / 32.0 lbs
Number of Ports	1	8	16
Display	19 inches		
Panel Type	Active Matrix TFT LCD		
Resolution Capabilities	Maximum Resolution up to 1280 x 1024 (SXGA)		
Pixel Pitch	Supports 0.098mm x 0.294mm		
Viewing Angle	140° (H) / 140° (V)		
Contrast Ratio	500:1		
Brightness	White 250 cd/m2 (Center 1 point Typ)		
Back Light	Four Lamps for Back Light		
Supported Colors	16.2M Colors (6-bit with FRC)		
Response Time	Rising Time: 2ms, Decay Time: 10ms		
Keyboard Mouse	106 Key PS/2 Keyboard with Touch Pad		
Sync	45 ~ 80KHz		
Power Source	100~240 VAC Input		
Power Consumption	25W (21.05W for Panel)		
Temperature	Operate: 32° ~ 122°F, Storage: -4° ~ 140°F		
Humidity	10% ~ 90% RH		
Material of Main Chassis	Heavy Duty Steel		
Certification	CE/FCC/UL/CUL/C-Tick		

:: Specification and wiring diagram subject to change without notice
 :: Limited Life Time Warranty
 :: Last Update: Oct/2007



WA-CASTER

Cabinet Caster Wheels



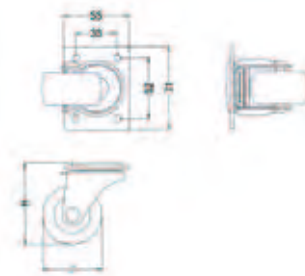
INTRODUCTION

The WA-CASTER cabinet steel caster added mobility to enable quick relocation of valuable server equipment and company data. The caster foot-lock can keep cabinet from slipping or roll away during maintenance.

FEATURES

- A Two Lockable Front Set
- B Add Mobility to Server Cabinet

Model Number	WA-CASTER
RoHS Compliance Version	Yes
Rack Units	Accessories
Dimensions [WxHxD]	71 x 70 x 55mm
Surface Finish	Orchid Zinc
Unit Contains	4 x Caster



WA-CM1UB

1U Cable Management Rack Kit



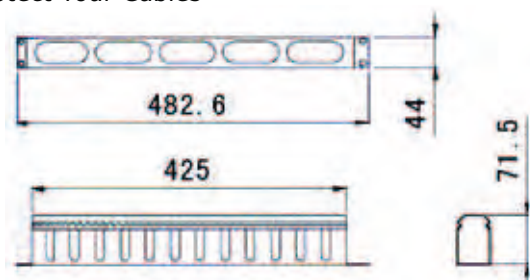
INTRODUCTION

WA-CM1UB is a cable manager that is designed to help keep your cables in place to make your cabinet a smart and easier to work with environment.

FEATURES

- A Easy Management and Grouping of Cables
- B Protect Your Cables

Model Number	WA-CM1UB
RoHS Compliance Version	Yes
Rack Units	Accessories
Dimensions [WxHxD]	482.6 x 44 x 71.5mm



WA-CM2UB

2U Cable Management Rack Kit

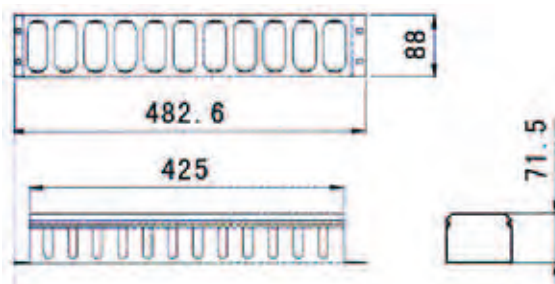


■ INTRODUCTION

WA-CM2UB is a cable manager that is designed to help keep your cables in place to make your cabinet a smart and easier to work with environment.

■ FEATURES

- A Easy Management and Grouping of Cables
- B Protect Your Cables



Model Number	WA-CM2UB
RoHS Compliance Version	Yes
Rack Units	Accessories
Dimensions [WxHxD]	482.6 x 88 x 71.5 mm

WA-DT0414

1U Digital Temperature Unit



■ INTRODUCTION

WA-DT0414 is a versatile, battery-operated LCD thermometer, ideal for monitoring the ambient temperature within an equipment rack or room. The temperature is displayed in degrees of Celsius. WA-DT0414 is housed in a 1U metal enclosure for easy rack-mounting, and two extra AC connections for powering up other rackmount accessories.

■ FEATURES

- A High Contrast, Easy-to-read LCD Display
- B Two Built-in AC Outlets
- C Over Temperature Alert
- D 1U with Metal Enclosure for Rackmount and Desktop
- E Temperature Sensor Extension to Monitor Specific Area

Model Number	WA-CM2UB
Rack Units	1U
Range	0°C ~ 50°C
Input	PCT (10K)
Output	2-Way Output
Consumption	3W
Mounting	19" standard

Power Supply	110 VAC
Accuracy	±1°C
Display	2-way 8-section digital pipe (red)
Ambient /Maintain Temperature	-10°C ~ 70°C / -20°C ~ 80°C

WA-FEET

Floor Leveling Feet



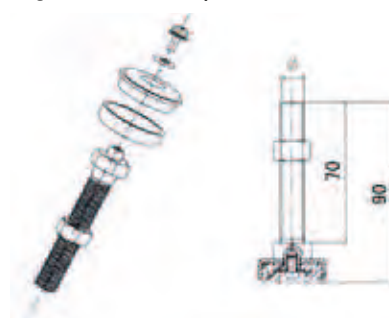
INTRODUCTION

If your cabinet location has texture tiles or uneven flooring, WA-FEET floor leveling feet can help rack-mount cabinet to stand firm without finding extra support or patch the floor gap. Quick assembly and setup to help secure the cabinet from sliding or moving during operation.

FEATURES

- A Easy and Quick Assembly

Model Number	WA-FEET
RoHS Compliance Version	Yes
Rack Units	Accessories
Dimensions [WxHxD]	1.75 x 3.75 x 1.75 mm
Materials	Cast Steel
Surface Finish	Carbonic Black
Unit Contains	Leveling Feet x 4



WA-KBR80B

1U Compact Keyboard Drawer



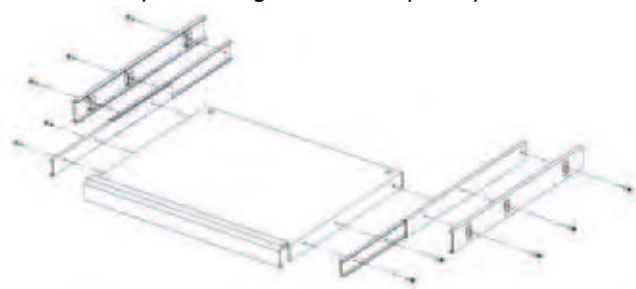
INTRODUCTION

Introduce the WA-KBR80B elegant and compact keyboard drawer meets system technician needs. WA-KBR80B fits in 1U space and provides more flexibility and security to your system access as well as daily maintenance.

FEATURES

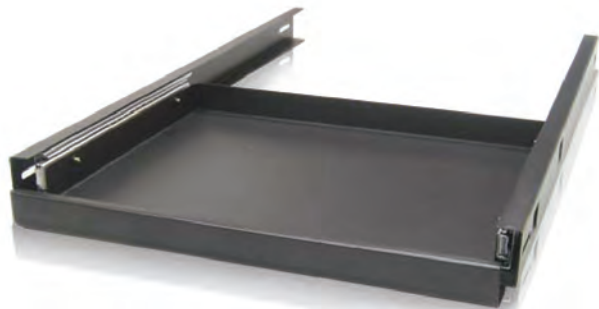
- A Designed to Fit in a Standard 19" 800mm Depth Cabinet
- B 1U Compact Design and Heavy Duty Steel

Model Number	WA-KBR80B
Loading Capacity	44.1lbs
Rack Units	Accessories
Dimensions [WxHxD]	470 x 49 x 580 mm
Materials	SPCC Cold Rolled Steel
Surface Finish	Degreasing, Picking, Phosphoric, and Powder Coat



WA-KBR96B

1U Compact Keyboard Drawer

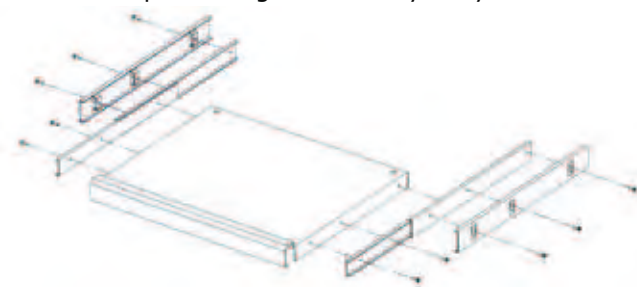


■ INTRODUCTION

Introduce the WA-KBR80B elegant and compact keyboard drawer meets system technician needs. WA-KBR80B fits in 1U space and provides more flexibility and security to your system access as well as daily maintenance.

■ FEATURES

- A Designed to Fit in a Standard 19" 1000mm Depth Cabinet
- B 1U Compact Design and Heavy Duty Steel



Model Number	WA-KBR96B
Loading Capacity	44.1lbs
Rack Units	Accessories
Dimensions [WxHxD]	470 x 49 x 711 mm
Materials	SPCC Cold Rolled Steel
Surface Finish	Degreasing, Picking, Phosphoric, and Powdercoat

WA-LB80B

Cabinet Supporting Bar



■ INTRODUCTION

Support heavy rackmount chassis on the cabinet with the WA-LB80B cabinet supporting bar. The quickest and simplest way to hold chassis that can not mount on rail or exceeds post mount limitation.

■ FEATURES

- A Heavy Duty Steel
- B Easy and Quick Installation

Model Number	WA-LB80B
Surface Finish	Degreasing, Picking, Phosphoric, and Powder Coat
Rack Units	Accessories
Dimensions [WxHxD]	35 x 38 x 550 mm
Materials	t1.2 SPCC Cold Rolled Steel

WA-LB96B

Cabinet Supporting Bar



INTRODUCTION

Support heavy rackmount chassis on the cabinet with the WA-LB80B cabinet supporting bar. The quickest and simplest way to hold chassis that can not mount on rail or exceeds post mount limitation.

FEATURES

- A Heavy Duty Steel
- B Easy and Quick Installation

Model Number	WA-LB80B
Surface Finish	Degreasing, Picking, Phosphoric, and Powder Coat
Rack Units	Accessories
Dimensions [WxHxD]	35 x 38 x 711 mm
Materials	t1.2 SPCC Cold Rolled Steel

WA-P1UB

1U Cabinet Front Cover Plate



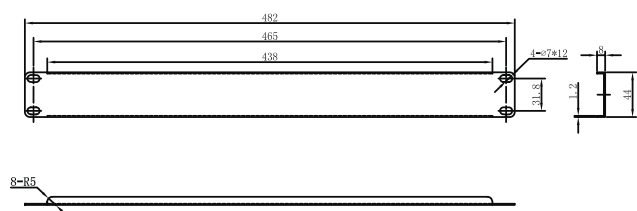
INTRODUCTION

The WA-P1UB cabinet front cover plate will give cabinet a uniform appearance, but also improve cabinet thermal management and cooling by blocking and redirecting the air flow to appropriate direction.

FEATURES

- A Easy and Quick Installation

Model Number	WA-P1UB
RoHS Compliance Version	Yes
Rack Units	Accessories
Dimensions [WxHxD]	485 x 44 x 12 mm
Materials	t1.2 SPCC Cold Rolled Steel
Surface Finish	Degreasing, Picking, Phosphoric, and Powder Coat



WA-P2UB

2U Cabinet Front Cover Plate



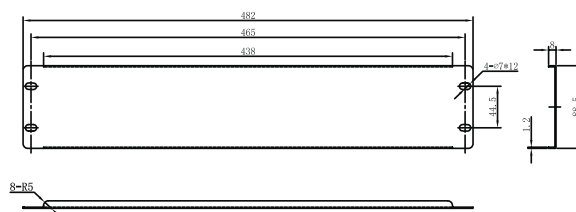
INTRODUCTION

The WA-P2UB cabinet front cover plate will give cabinet a uniform appearance, but also improve cabinet thermal management and cooling by blocking and redirecting the air flow to appropriate direction.

FEATURES

- A Easy and Quick Installation

Model Number	WA-P2UB
RoHS Compliance Version	Yes
Rack Units	Accessories
Dimensions [WxHxD]	485 x 89 x 12 mm
Materials	t1.2 SPCC Cold Rolled Steel
Surface Finish	Degreasing, Picking, Phosphoric, and Powder Coat



WA-P3UB

3U Cabinet Front Cover Plate



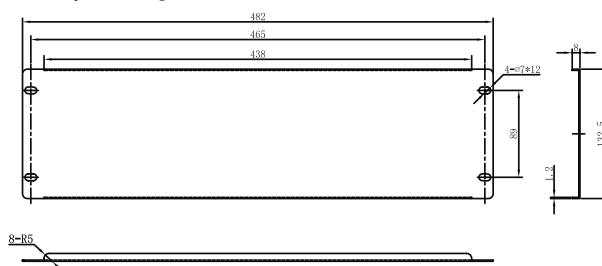
INTRODUCTION

The WA-P3UB cabinet front cover plate will give cabinet a uniform appearance, but also improve cabinet thermal management and cooling by blocking and redirecting the air flow to appropriate direction.

FEATURES

- A Easy and Quick Installation

Model Number	WA-P3UB
RoHS Compliance Version	Yes
Rack Units	Accessories
Dimensions [WxHxD]	485 x 133 x 12 mm
Materials	t1.2 SPCC Cold Rolled Steel
Surface Finish	Degreasing, Picking, Phosphoric, and Powder Coat



WA-PS010

10 Outlet Surge Protection Power Strip



INTRODUCTION

The WA-PS010 surge protection power strip can protect your electronic equipments from lightning and power surge damages. Changes in voltage cause lockups and loss of critical data. You need a reliable surge protection for office computers and rackmount electronic equipments.

FEATURES

- A Protect Your Rackmount Equipment
- B Modularized and Multifunctional
- C Easy and Quick Installation

Model Number	WA-PS010
RoHS Compliance Version	Yes
Rack Units	Accessories
Maximum Power	2500W
Rating Current	10A

WA-PS012

12 Outlet Surge Protection Power Strip



INTRODUCTION

The WA-PS012 surge protection power strip can protect your electronic equipments from lightning and power surge damages. Changes in voltage cause lockups and loss of critical data. You need a reliable surge protection for office computers and rackmount electronic equipments.

FEATURES

- A Protect Your Rackmount Equipment
- B Modularized and Multifunctional
- C Easy and Quick Installation

Model Number	WA-PS012
RoHS Compliance Version	Yes
Rack Units	Accessories
Maximum Power	2500W
Rating Current	10A
Dimensions [WxHxD]	28.6 x 1.8 x 2.4 inch

WA-PS022

22 Outlet Surge Protection Power Strip



■ INTRODUCTION

The WA-PS022 surge protection power strip can protect your electronic equipments from lightning and power surge damages. Changes in voltage cause lockups and loss of critical data. You need a reliable surge protection for office computers and rackmount electronic equipments.

■ FEATURES

- A Protect Your Rackmount Equipment
- B Modularized and Multifunctional
- C Easy and Quick Installation

Model Number	WA-PS022
RoHS Compliance Version	Yes
Rack Units	Accessories
Dimensions [WxHxD]	48.5 x 1.8 x 2.4 mm
Maximum Power	4000W
Maximum Current	16A
Rating Current	10A

WA-PS036

36 Outlet Surge Protection Power Strip



■ INTRODUCTION

The WA-PS036 surge protection power strip can protect your electronic equipments from lightning and power surge damages. Changes in voltage cause lockups and loss of critical data. You need a reliable surge protection for office computers and rackmount electronic equipments.

■ FEATURES

- A Protect Your Rackmount Equipment
- B Modularized and Multifunctional
- C Easy and Quick Installation

Model Number	WA-PS036
RoHS Compliance Version	Yes
Rack Units	Accessories
Dimensions [WxHxD]	73.4 x 1.8 x 2.4 mm
Maximum Power	4000W
Maximum Current	16A
Rating Current	10A

WA-SF120-2FAN

Cabinet 120mm Cooling Fan



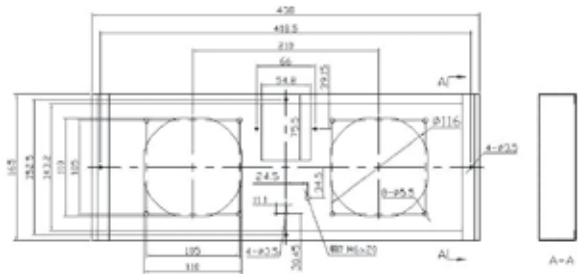
■ INTRODUCTION

The WA-SF120-2FAN 120mm AC input cooling fan can be installed on the top cover of cabinet to increase air circulation and cooling air-flow. The fan assembly also has air filters to block dust and dirt to enter cabinet or object that may damage the cooling fan.

■ FEATURES

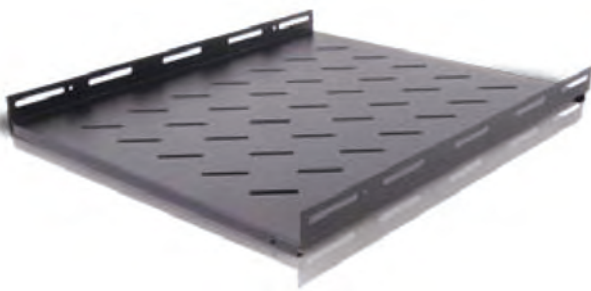
- A** Keeps Your Rackmount Equipment Cool
- B** Extends Server Life and Minimizes Downtime

Model Number	WA-SF120-2FAN
RoHS Compliance Version	Yes
Rack Units	Accessories
Dimensions [WxHxD]	438 x 57 x 165 mm



WA-SF80B

Heavy Duty Rackmount Shelf



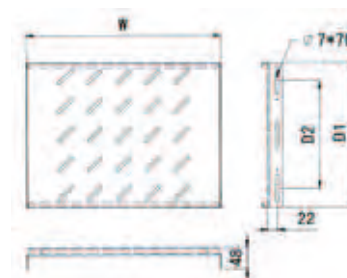
■ INTRODUCTION

Use the WA-SF80B rackmount shlef if you have equipment that is not rack mountable but would like put it on your rack cart. The shelf mounts to front and rear tapped rails with 4 screws. It is made from 1.2mm SPCC metal and is zinc coated.

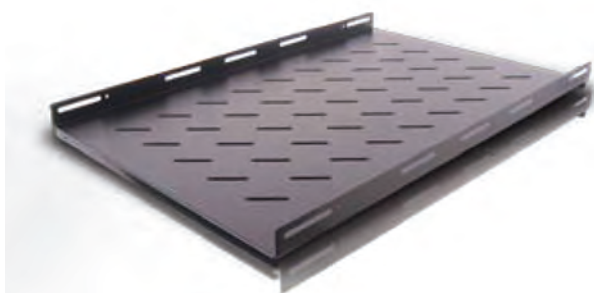
■ FEATURES

- A Heavy Duty Steel
- B Easy and Quick Installation

Model Number	WA-SF80B
RoHS Compliance Version	Yes
Rack Units	Accessories
Dimensions [WxHxD]	470 x 48 x 550 mm
Materials	t1.2 SPCC Cold Rolled Steel
Surface Finish	Degreasing, Picking, Phosphoric, and Powder Coat
Loading Capacity	60 kg



WA-SF96B



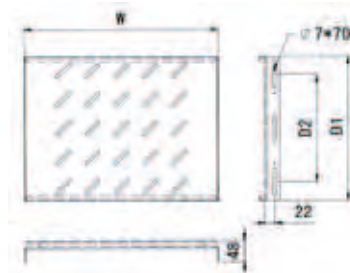
■ INTRODUCTION

Use the WA-SF96B rackmount shelf if you have equipment that is not rack mountable but would like put it on your rack cart. The shelf mounts to front and rear tapped rails with 4 screws. It is made from 1.2mm SPCC metal and is zinc coated.

■ FEATURES

- A Heavy Duty Steel
- B Easy and Quick Installation

Model Number	WA-SF96B
RoHS Compliance Version	Yes
Rack Units	Accessories
Dimensions [WxHxD]	470 x 48 x 730 mm
Materials	t1.2 SPCC Cold Rolled Steel
Surface Finish	Degreasing, Picking, Phosphoric, and Powder Coat
Loading Capacity	60 kg



WA-SFR80B



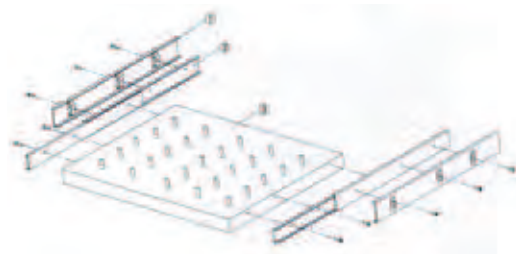
■ INTRODUCTION

The WA-SFR80B sliding tray provides ideal rack storage for computing equipment, offering an enhanced level of flexibility and stability. It is made from 1.2mm SPCC metal and is zinc coated. This sliding tray can hold up to 44.1 lbs of weights and provide a cost saving solution for non-rackmountable equipments.

■ FEATURES

- A Heavy Duty Steel
- B Easy and Quick Installation
- C Provides Easy Roll-Out Access to Your Equipment
- D Vented to Provide Maximum Air Flow

Model Number	WA-SFR80B
Parameter	Flexing Length - 210 mm
Rack Units	Accessories
Dimensions [WxHxD]	470 x 49 x 580 mm
Materials	SPCC Cold Rolled Steel
Surface Finish	Degreasing, Picking, Phosphoric, and Powder Coat
Loading Capacity	44.1 lbs



WA-SFR96B

Heavy Duty Sliding Tray

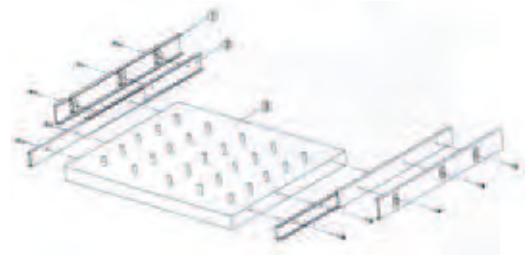


INTRODUCTION

The WA-SFR96B sliding tray provides ideal rack storage for computing equipment, offering an enhanced level of flexibility and stability. It is made from 1.2mm SPCC metal and is zinc coated. This sliding tray can hold up to 44.1 lbs of weights and provide a cost saving solution for non-rackmountable equipments.

FEATURES

- A Heavy Duty Steel
- B Easy and Quick Installation
- C Provides Easy Roll-Out Access to Your Equipment
- D Vented to Provide Maximum Air Flow



Model Number	WA-SFR96B
Parameter	Flexing Length - 210 mm
Rack Units	Accessories
Dimensions [WxHxD]	470 x 49 x 680 mm
Materials	SPCC Cold Rolled Steel
Surface Finish	Degreasing, Picking, Phosphoric, and Powder Coat
Loading Capacity	44.1 lbs

WA-FANAC120

Wall-Mount Cabinet 120mm Cooling Fans



INTRODUCTION

The WA-FANAC120 has two 120mm AC cooling fan that can be installed on the top of wall-mount cabinet. It improves the air circulation and maximizes the cooling air flow. The package also comes with 2 fan guards that can block object enter the cabinet.

FEATURES

- A Provides Maximum Air Flow
- B Keeps the Rackmount Equipment Cool
- C Extends Server Life and Minimizes Downtime

Model Number	WA-FANAC120
Package Content	2 Fanguard, 8 Screws, and 1 Set of 120mm Fan
Rack Units	Accessories
Dimensions [WxHxD]	120 x 25 x 120 mm
RoHS Materials	Yes

WA-LKEY

Cabinet Security Key Locks

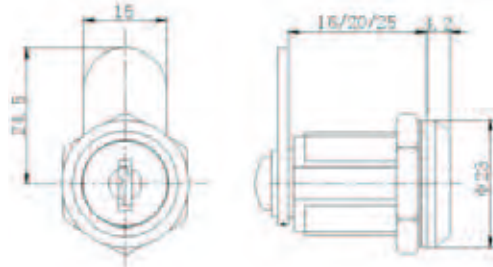


INTRODUCTION

Protect your valuable asset with the WA-LKEY security key locks for server room cabinet such as important company data, confidential information, and expensive rackmount equipments which is vital to company operation and profit.

FEATURES

- Ⓐ Easy and Quick Assembly



Model Number	WA-LKEY
RoHS Compliance Version	Yes
Rack Units	Accessories

WA-SW10-M6 WA-SW20-M6

Screws Pack



*WA-SW10-M6



*WA-SW20-M6

INTRODUCTION

Are you running out of screws and go nuts? A spare accessories pack of screws and nuts can fix your equipments in place. It comes with square nuts and pan head screws. M6 x 12 screws; M6 nut.

