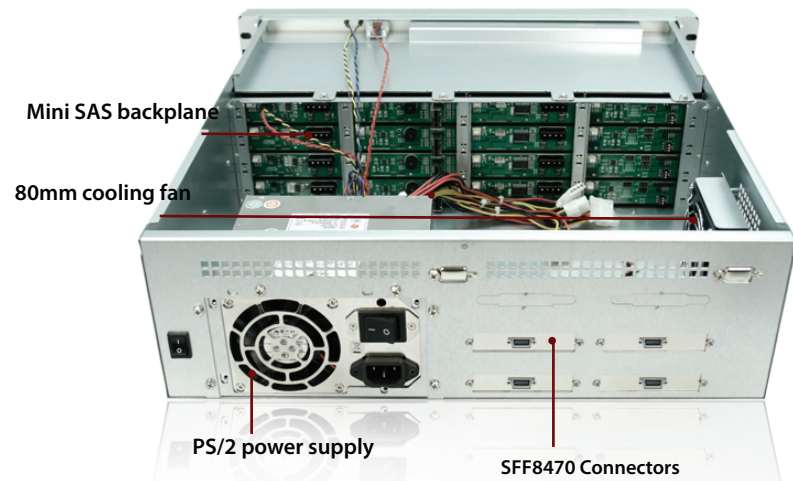
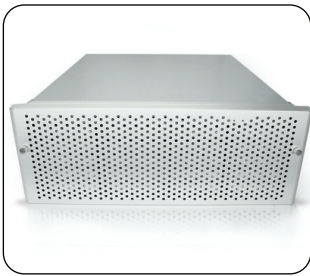
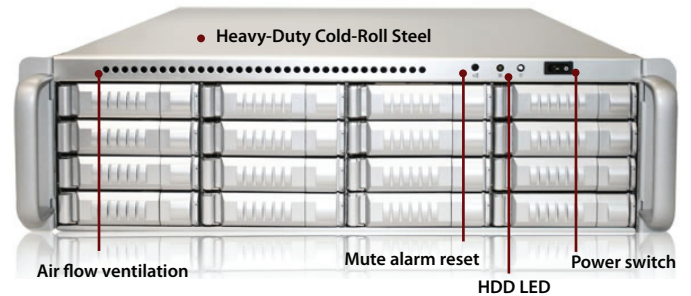


# dAGE3 | 6U40-ML4

3U 16-bay SAS/SATA Multilane SFF8470 JBOD Chassis 500W PSU



## Introduction

dAGE316U40-ML4 is an external 3U-16 Bay Hot-Swap SAS/SATA rackmount disk array storage chassis. It provides users a most big storage capacity for up to 16 SATA/SAS drives for 1/0/5/JBOD raid configuration. This 3U-16 Bay external SAS/SATA JBOD is designed with 4 high quality External Infiniband (SFF8470) connectors. One ball bearing 80mm fan offers long lasting and enhanced thermal cooling solution. dAGE316U40-ML4 provides maximum storage and performance to high density storage system.

## Features

- Supports Up to 16 SAS/SATA I/II HDDs
- 4 x Infiniband (SFF8470) Interface for Easy Connection
- 80mm x 1 Cooling Fan for Ventilation
- Mini SAS Backplane
- LED Indicators for Power and Activity on Each HDD Tray
- Power and Alarm Reset Switch
- Optional Redundant Power Supply



[Learn More](#)

## Specification

|                          |  |
|--------------------------|--|
| Model Number             | dAGE316U40-ML4                         |
| RoHS Compliance          | Yes                                    |
| Host Interface           | 4 Infiniband (SFF8470) Connectors      |
| LED Display              | LED for Power On/Off                   |
| Power Supply             | 750W, Input: 100 to 240 Vac Full Range |
| Material                 | Heavy-Duty Cold-Roll Steel             |
| Material of Main Chassis | Zinc-Plated with Bright Chromate       |
| Cooling                  | 1 x 80 mm Cooling Fans                 |
| Dimensions (W x H x D)   | 19 x 5.25 x 19 inch                    |

\* Specification is subject to change without notice