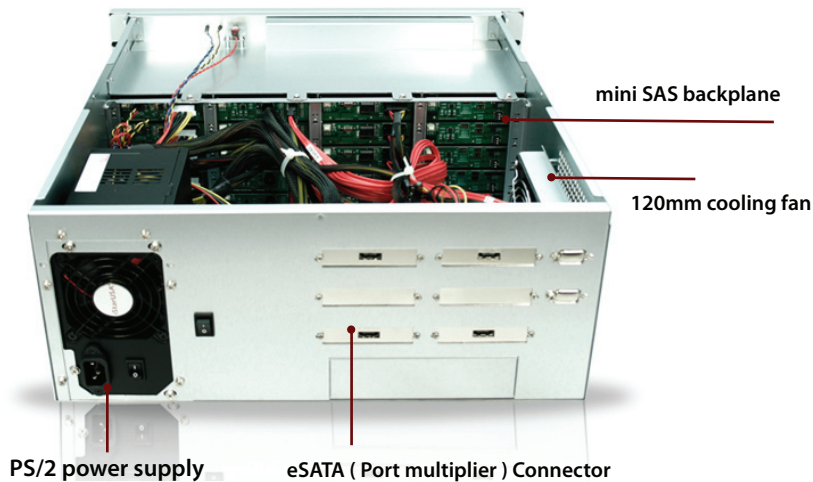
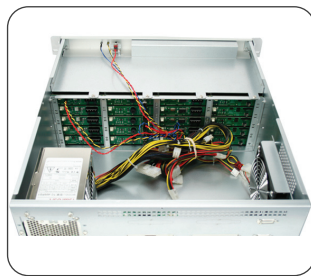
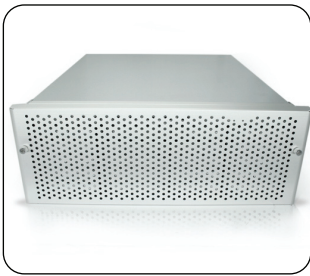
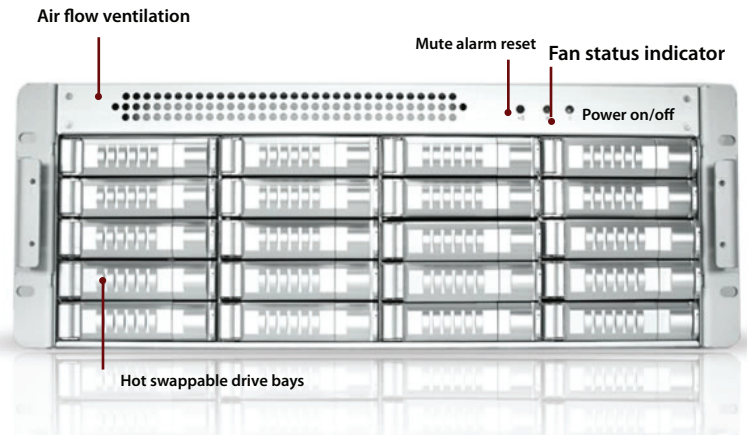


dAGE420U40-ES

4U 20-bay SATA/SAS eSATA (Port Multiplier) JBOD Chassis 500W PSU



Introduction

dAGE420U40-ES is an external 4U-20 Bay Hot-Swap SATA/SAS rackmount disk array storage chassis. It provides users a most big storage capacity for up to 20 SATA/SAS drives for all the RAID configuration. This 4U-20 Bay external SATA/SAS JBOD is designed with 4 high quality eSATA (Port Multiplier) connectors. One side 120mm ball bearing fan offers an enhanced thermal cooling solution for keeping the equipment from heat damage. dAGE420U40-ES provides maximum storage and performance to high density storage system.

Features

- Supports Up to 20 SAS/ SATA I/II (1.5/3 Gbps) HDDs
- 4 x eSATA (port multiplier) Interface for Easy Connection
- 120mm x 1 Cooling Fan for Ventilation
- Mini SAS Backplane
- LED Indicators for Power and Activity on Each HDD Tray
- Power and Alarm Reset Switch
- Optional Redundant Power Supply



[Learn More](#)

Specification

Model Number	dAGE420U40-ES
RoHS Compliance	Yes
Host Interface	4 eSATA connectors (Port Multiplier)
LED Display	LED for Power On/Off
Power Supply	750W, Input: 100 to 240 Vac Full Range
Material	Heavy-Duty Cold-Roll Steel
Material of Main Chassis	Zinc-Plated with Bright Chromate
Cooling	1 x 120 mm Cooling Fans
Dimensions (W x H x D)	19 x 7 x 20.8 inch

* Specification is subject to change without notice