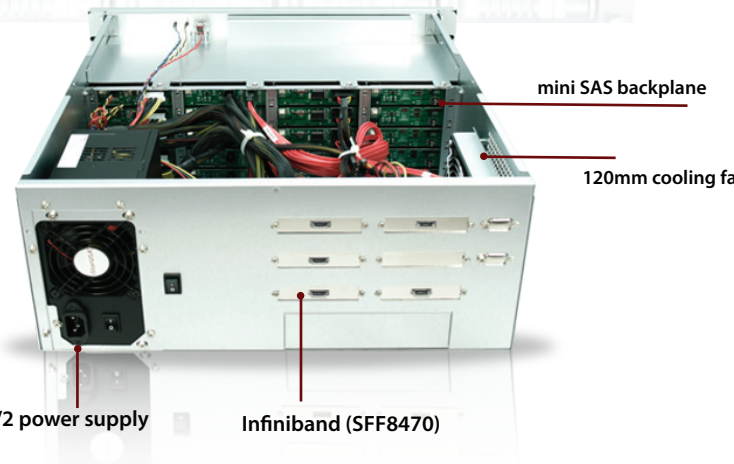
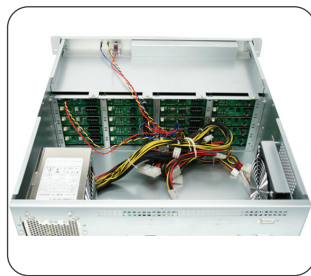
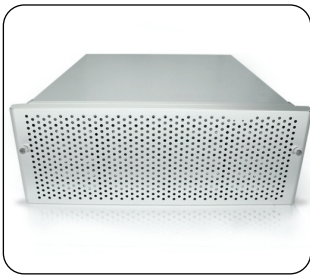
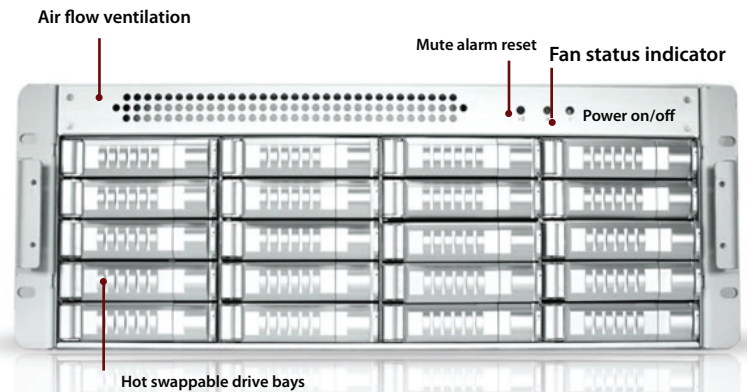


dAGE420U40-ML5 4U 20-bay SATA/SAS Multilane SFF8470 JBOD Chassis 500W PSU



Introduction

dAGE420U40-ML5 is an external 4U-20 Bay Hot-Swap SATA/SAS rackmount disk array storage chassis. It provides users a most big storage capacity for up to 20 SATA/SAS drives for all the RAID configuration. This 4U-20 Bay external SATA/SAS JBOD is designed with 5 high quality Infiniband (SFF8470) connectors. One side 120mm ball bearing fan offers an enhanced thermal cooling solution for keeping the equipment from heat damage. dAGE420U40-ML5 provides maximum storage and performance to high density storage system.

Features

- Supports Up to 20 SAS/ SATA I/II (1.5/3 Gbps) HDDs
- 5 x Infiniband (SFF8470) Interface for Easy Connection
- 120mm x 1 Cooling Fan for Ventilation
- Mini SAS Backplane
- LED Indicators for Power and Activity on Each HDD Tray
- Power and Alarm Reset Switch
- Optional Redundant Power Supply



[Learn More](#)

Specification

Model Number	dAGE420U40-ML5
RoHS Compliance	Yes
Host Interface	5 Infiniband (SFF8470)
LED Display	LED for Power On/Off
Power Supply	750W, Input: 100 to 240 Vac Full Range
Material	Heavy-Duty Cold-Roll Steel
Material of Main Chassis	Zinc-Plated with Bright Chromate
Cooling	1 x 120 mm Cooling Fans
Dimensions (W x H x D)	19 x 7 x 20.8 inch

* Specification is subject to change without notice

Optional Accesories

- cAGE-AAMMM1- External mini SAS to external mini SAS cable.
- cAGE-AAMMI-H- Internal mini SAS cable
- zAGE-H-8788-DU- Dual mini SAS x4 host adapter
- zAGE-H-8788-QU- Quad mini SAS x4 host adapter
- zAGE-H-8788-SI- Mini SAS x4 host adapter