

A B C D E F G

1

2

3

4

5

6

7

8

9

10

1

2

3

4

5

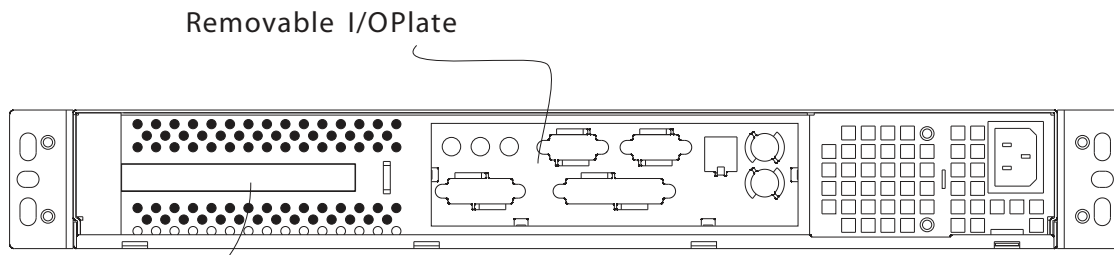
6

7

8

9

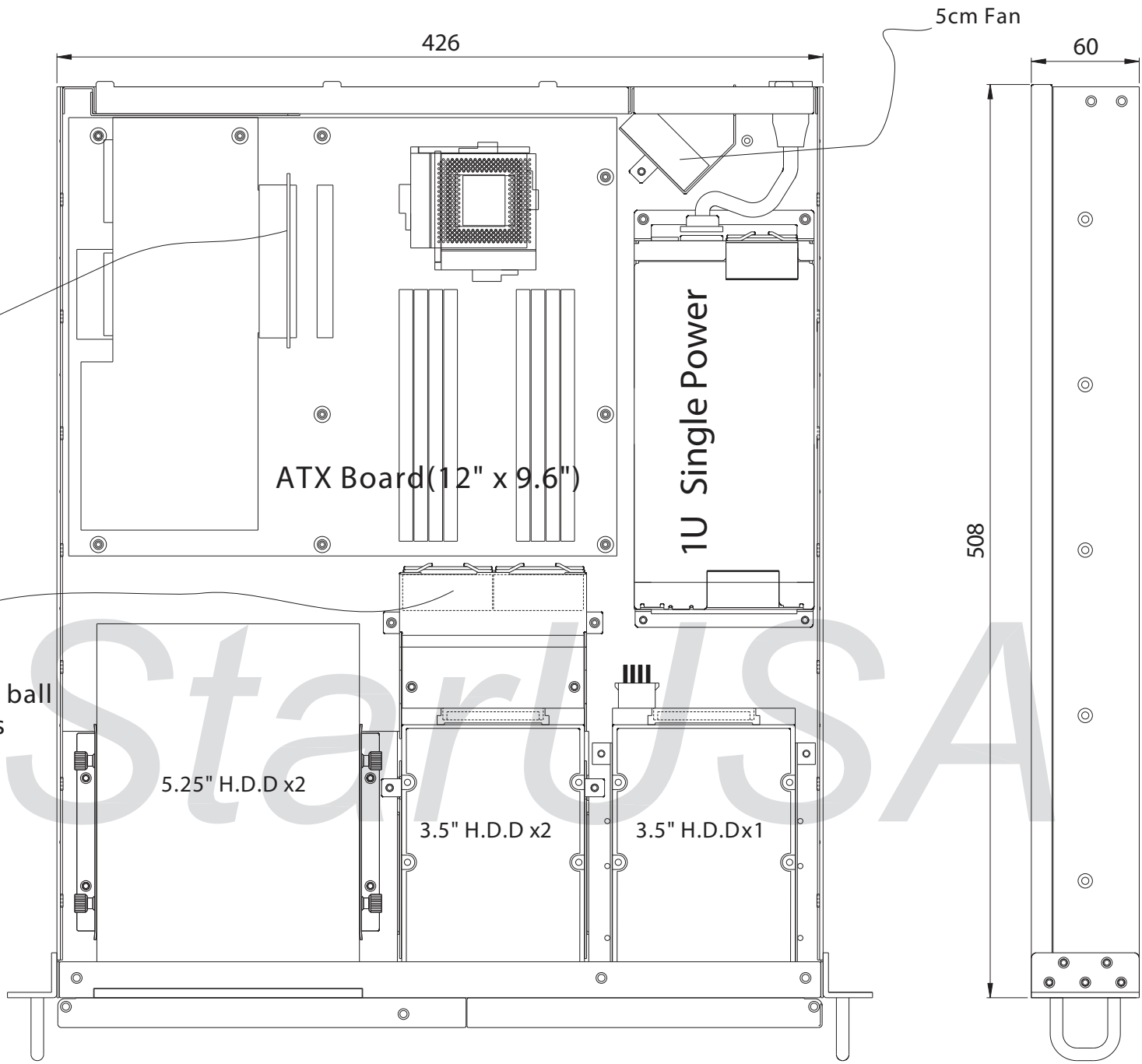
10



Removable I/O Plate

Open Slot x1

Dimensions unit: mm



426

5cm Fan

60

1U Riser card (PCI /PCI-E /AGP)

ATX Board (12" x 9.6")

1U Single Power

508

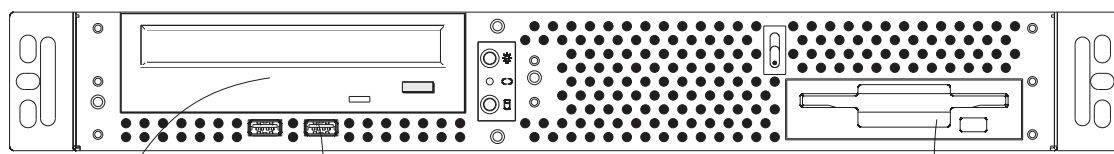
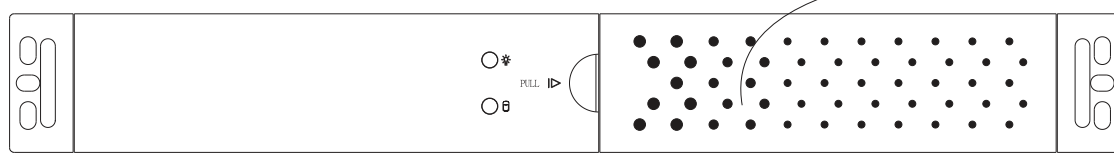
Removable 4cm ball bearing fan x 2pcs

5.25" H.D.D x2

3.5" H.D.D x2

3.5" H.D.D x1

Metallic Aluminum Bezel



5.25" Device x1

USB Port x2

3.5" Device x1

Model NO.	D-107	<b>iStarUSA™</b>		
EXT		DATE		
INT		PROJ		
M/B		REV NO.	X	SCALE 1:1
SLOT		DRAWN	ANDY	UNIT mm

A B C D E F G